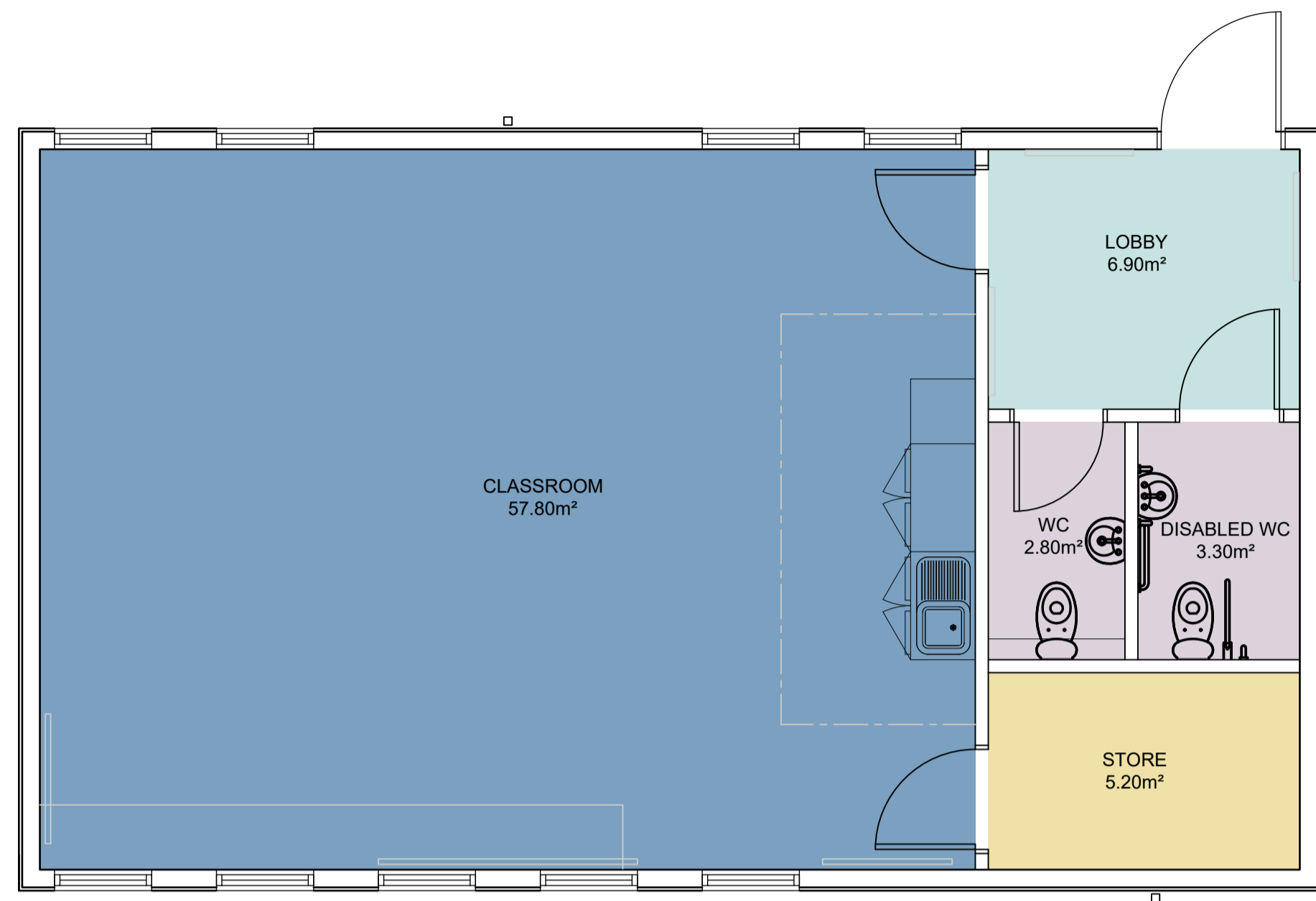
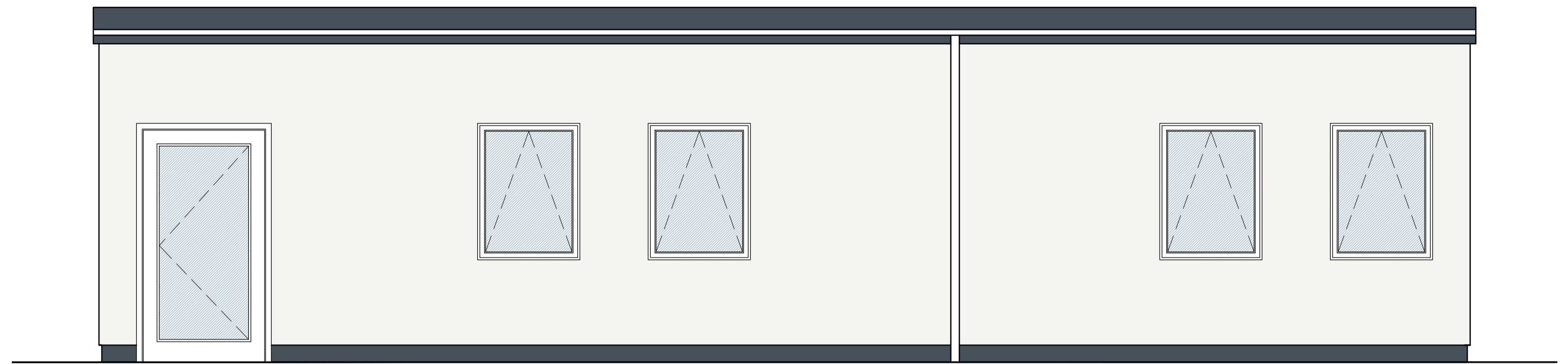
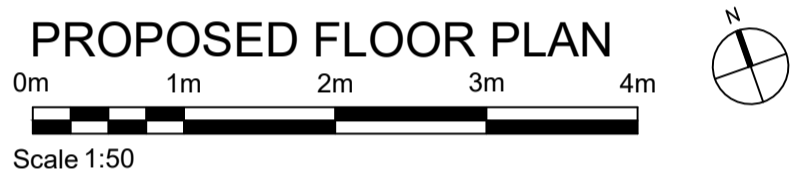


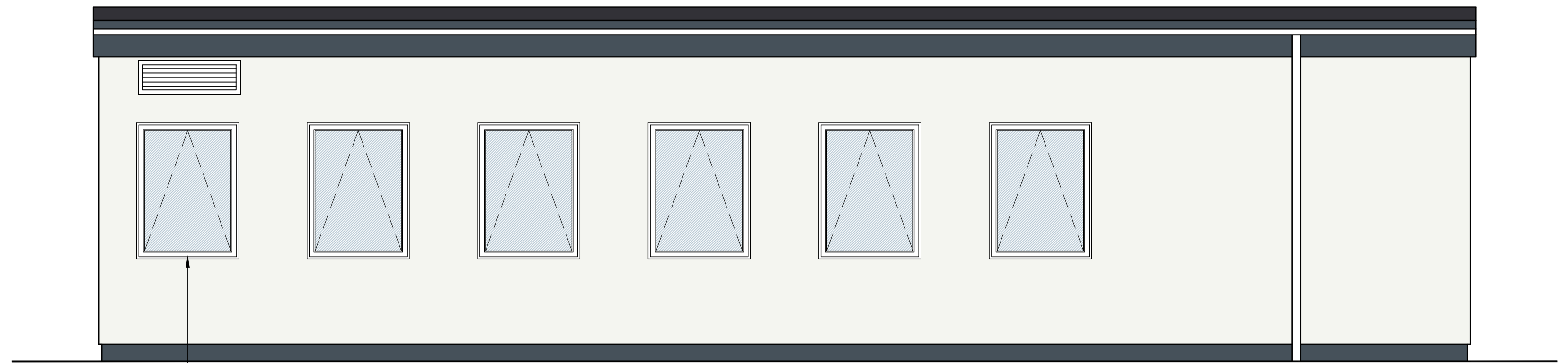
SCHOOL DEVELOPMENT: HENHAM & UGLEY PRIMARY SCHOOL



- KEY OF SPACES**
- Junior Classroom - 57.8m²
 - Lobby - 6.9m²
 - Accessible WC - 3.30m²
 - Pupil WC - 2.8m²
 - Store - 5.2m²



PROPOSED NORTH FACING ELEVATION



PROPOSED SOUTH FACING ELEVATION

Double glazed suncooled uPVC windows

uPVC Grey fascia board

Plastisol steel cladding - Ivory

uPVC White square rainwater goods

Plastisol steel plinth - Grey



PROPOSED EAST FACING ELEVATION



PROPOSED WEST FACING ELEVATION

